

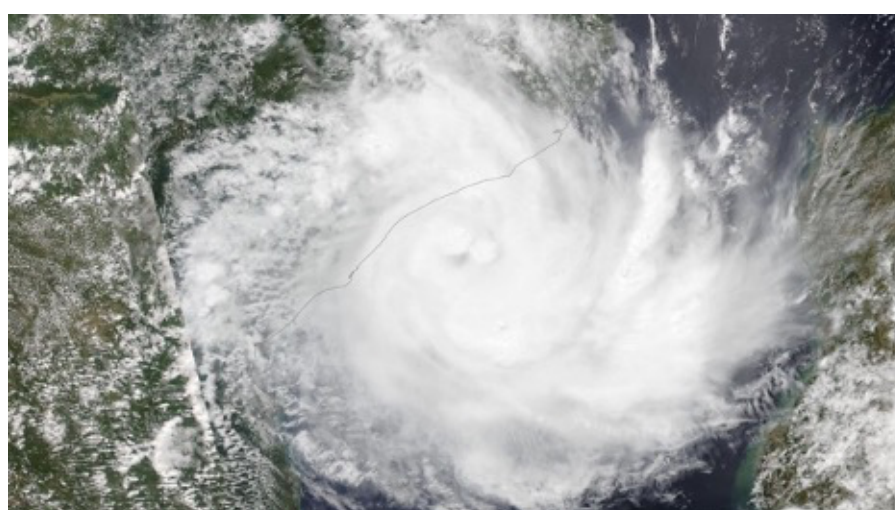
Focus on Compassion

Enhancing Access to Palliative Care Worldwide

Cyclone Freddy Causes Widespread Destruction in Malawi, Mozambique and Madagascar

Tropical Cyclone Freddy has devastated parts of southeast Africa, and Malawi has been hit particularly hard by heavy wind, rains, floods and landslides. The [World Meteorological Organization](#) says that Freddy, which started in February, may be the longest lasting cyclone ever recorded. Hundreds have died and hundreds of thousands have been displaced in Malawi, Madagascar and Mozambique. All three countries have had significant damage and loss of life, but Malawi – which was already facing a large cholera outbreak – has seen widespread devastation in the southern part of the country.

Over the weekend, the country's death toll was reported at 438. Malawi's president, Lazarus Chakwera, has declared a 14-day national mourning period and a state of emergency as approximately 345,000 people have been affected. Hundreds of evacuation centers have been set up for the many whose homes were swept away. Rescue operations are still ongoing for those who are missing.



Visible satellite image of Tropical Cyclone Freddy on March 10, 2023, as it approached Mozambique (Image credit: NASA WorldView).

GPIC partners [Palliative Care Support Trust \(PCST\)](#) and [St. Luke's Hospital](#) are both located in areas of southern Malawi affected by the cyclone. Located in Blantyre, one of the cities significantly impacted, PCST is trying to follow up with patients to assess their needs. St. Luke's Hospital chief hospital administrator, Winasi Boma, said *"some of our patients do not have food and shelter and this has an impact on the care. With the floods risk of water-borne diseases and other forms of diseases is high. Therefore, the (palliative care) unit needs resources in terms of fuel, medicines and nutritional support and basic needs for our clients in order to reach out those that are in most need."*

Two of our other partners in Malawi, [Palliative Care Association of Malawi \(PACAM\)](#) and Nkhoma Mission Hospital, are located further north and were not hit by the cyclone. As the national association, PACAM supports hospices and palliative care organizations across the country. PACAM executive director, Lameck Thambo, said *"Many things have been damaged such as water systems, bridges, roads and electricity. Internet connectivity is also not strong enough in many areas. Our valued palliative care patients – including children – have been affected directly and indirectly."*

Despite the many challenges, patient care remains at the forefront for PCST and St. Luke's. They will continue to reach their patients with basic needs such as food and medicines during this challenging time. If you would like to help support these organizations, you can make a donation to our [Disaster Response Fund](#) (note the name of the hospice in the 'designate partner' field or allocate to 'area of greatest need').

GPIC Welcomes Phil Newbold as Interim CEO

We are pleased to announce that Phil Newbold has assumed the role of interim chief executive officer of Center for Hospice Care (CHC), Hospice Foundation (HF) and Global Partners in Care while the board of directors conducts a national search for a permanent replacement for outgoing CEO Mark Murray. Wrapping up an unprecedented 32-year career with CHC – with the last 25 as CEO – Mark concluded his tenure on December 31st. We are grateful for Mark's many years of dedicated support and leadership and wish him well as he embarks on his next chapter!



Bringing along with him many decades of healthcare leadership experience, Phil Newbold has served as CEO of major health systems in Indiana, and he is a frequent author and speaker on many emerging health care trends. He is a nationally recognized presenter on innovation and building healthy communities. His deep insight, perspective and knowledge will add significant value to CHC, HF and GPIC. Phil is also a strong advocate for GPIC's work in global palliative care, and we are pleased to be working with him during this transition.

Welcome, Phil!

Celebrating Social Workers!

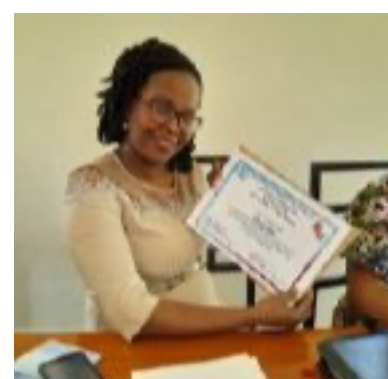
In the USA, we honor social workers during the month of March. Globally, world social work day is celebrated on 21st March. Social workers are integral members of palliative care teams. GPIC extends a big THANK YOU to all social workers who provide support to palliative care patients and families.



Update from Ukraine

"This past year has meant that we look at our world from different perspectives..."

Dr. Olena Riga, professor at Center for Palliative Medicine, Kharkiv National Medical University shared a [reflection in ehospice](#) on the state of palliative care in Ukraine one year into the Russian invasion.



Apply Now for the African Palliative Care Education Scholarship Fund

Applications are available on [APCA's website](#)

Deadline is March 22!

Health and social workers across Africa who are interested in palliative care and studying at any level are invited to apply. To qualify for the scholarship, you must have already obtained admission to a palliative care course. Nurses, social workers, clinical officers, physiotherapists and music therapists are encouraged to apply.

Please direct questions to: scholarships@africanpalliativecare.org.

GPIC Disaster Response Fund

The need for palliative care does not stop when a disaster strikes. GPIC's disaster response fund supports our partners' vital work in times of crisis. Funds have been used to help partners continue providing their services after natural disasters and COVID-19.

Through your donations, we are able to support our partners' ability to provide compassionate palliative care in the immediate aftermath of natural disasters, pandemics and humanitarian crises. Our partners are committed to ensuring necessary palliative care continues during a disaster. Help us make sure they are able to continue delivering compassionate care to their patients!

Donate to the Disaster Response Fund to Help our Partners in Malawi!

Help us spread the word!
Follow us on social media and share our story with your networks.



Our Contact Information
{{Organization Name}}
{{Organization Address}}
{{Organization Phone}}
{{Organization Website}}

{{Unsubscribe}}

