

Enhancing Access to Palliative Care Worldwide

After the Cyclone: an Update from Malawi

While the devastation of a cyclone can be immediate and destructive, the long-term impacts – especially on the displaced whose homes were destroyed – can be difficult to address. In Blantyre, Malawi's most populous city, nearly 30,000 people were left homeless from mudslides and flooding. Our partners there, Palliative Care Support Trust, are still trying to contact their patients throughout the area and determine what support is needed. This work is being assisted by a disaster response donation by their US partner, UpliftedCare. The president of Malawi, Lazarus Chakwera, announced earlier this month that the death toll in the country had reached more than 1,000 people.

The Palliative Care Association of Malawi (PACAM) has its headquarters in the country's capital city of Lilongwe, outside the area hit by the cyclone. Nonetheless, they mobilized quickly to check on their palliative care members and partners across the country to help assess damage and find ways to assist their palliative care colleagues in ensuring continuity of care for their patients. The immediate needs of palliative care patients can include medicines, food, shelter and other basic necessities.



Women walk to a nearby displacement center in Blantyre during the aftermath of Cyclone Freddy. Photo courtesy of Thoko Chikondi/AP

In Mulanje District, local media reports story after story of not only lost lives and homes, but also of infrastructure and agricultural devastation. Sixty-four roads were completely cut-off and 21 bridges washed away. Entire fields of crops were completely destroyed. The World Food Programme is providing substantial relief to camps, but more will need to be done. The Malawi Parliament just passed a Disaster Risk Management Bill which has been stalled in draft form for 6 years. While it will do much to help Malawi better manage future disasters, there are still many immediate needs right now. The palliative care team at Mulanje Mission Hospital, a potential partner looking for a US partner match, is working with the entire hospital team in the initial emergency response for patients in their catchment area. One thousand homes collapsed and there are 7 internally displaced persons camps. Beginning in May, they will shift their activities toward reconstruction and longer-term investments.

Continue reading this story.

WHPCA Advocacy Guide on Universal Health Coverage

In advance of the September High-Level Meeting on UHC at the United Nations, The Worldwide Hospice Palliative Care Alliance (WHPCA) launched the WHPCA Universal Health Coverage (UHC) Advocacy Guide today on World Health Day 2023.



Dr Tedros Adhanom Ghebreyesus
Director-General
 World Health Organization

“We cannot achieve Universal Health Coverage without palliative care.”

Dr Tedros Adhanom Ghebreyesus
Director General of WHO

Read more about the guide and download it here

15th Scientific Conference and Annual General Meeting of the Hospice and Palliative Care Association of Nigeria

The Hospice & Palliative Care Association of Nigeria is hosting the 15th Scientific Conference and Annual General Meeting which will be held at Enugu in South East Nigeria on the 5th and 6th of July 2023. The theme for the conference is "Palliative Care in Humanitarian Settings." Abstract submissions can be emailed to hpcanabstractenugu2023@gmail.com. Further details on the conference will be available soon.

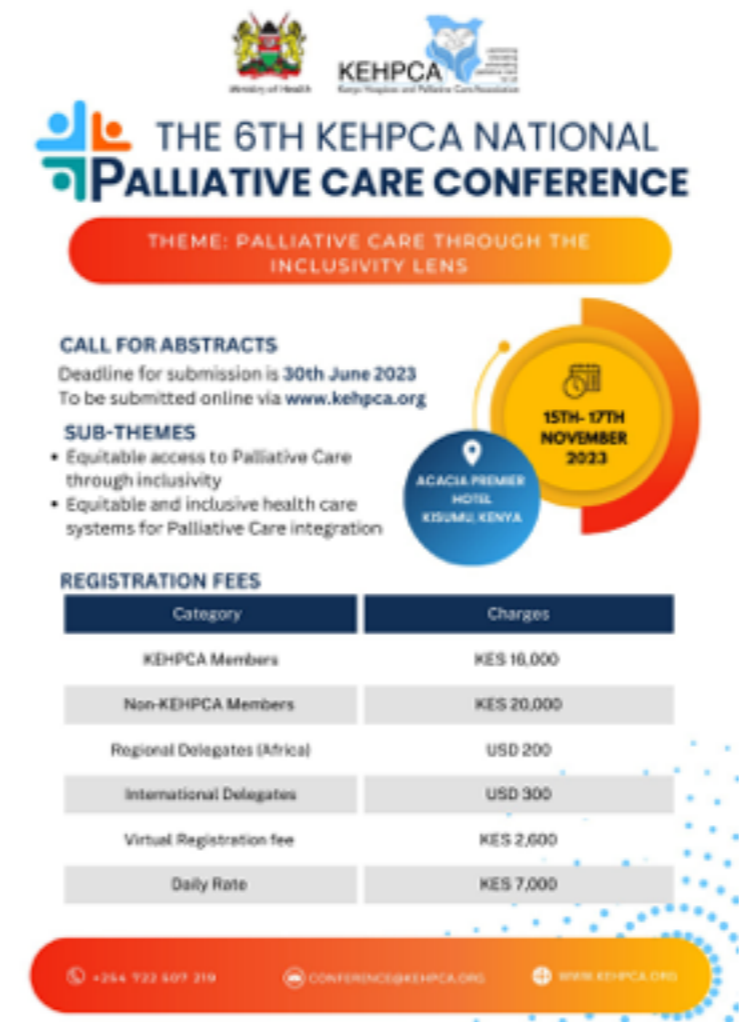


6th KEHPCA National Palliative Care Conference

Palliative Care Through the Inclusivity Lens

15th – 17th November 2023

To enhance learning and knowledge translation in palliative care and related fields, KEHPCA has held biannual conferences since its inception. Four years into the advent of COVID-19, KEHPCA and its partners have experienced much learning that brought new dimensions to the role of palliative care. The conference will seek to present palliative care through the lens of equity and inclusivity and encourage access to palliative care by WHOEVER needs it, provided WHENEVER it is needed, WHEREVER the patient is by WHOEVER is able to provide the care.



Enhancing Access to Palliative Care through Education

Global Partners in Care partners with universities and other research institutions to support global palliative care with research and learning opportunities for students. Your support of our 2022 Annual Appeal will allow us to expand our internship program and make it possible for more students around the world to engage in bilateral global knowledge exchanges about palliative care. With your help, we can engage and educate the next generation of palliative care leaders!



Support 2022 Annual Appeal

Help us spread the word!
Follow us on social media and share our story with your networks.



Our Contact Information

{{Organization Name}}

{{Organization Address}}

{{Organization Phone}}

{{Organization Website}}



{{Unsubscribe}}